

MX Cage Clamp Terminal and Cable Connector

User Manual

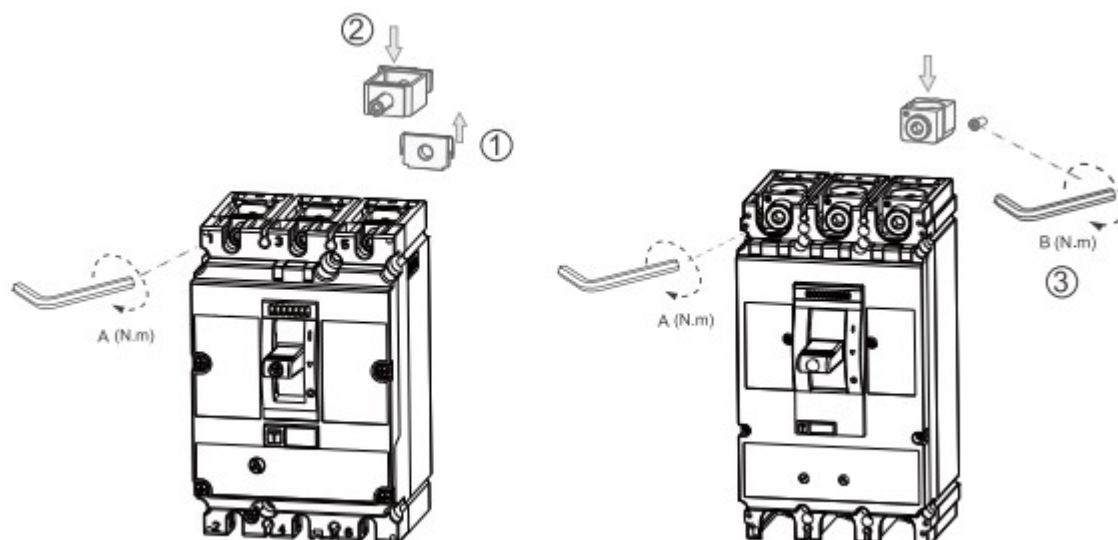


Danger, installation and use by electricians only



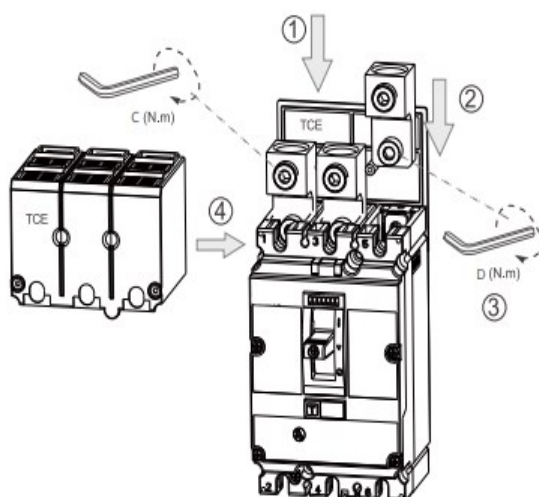
Page 1/2

■ Cage Clamp Terminal



Serial No.	Wiring capacity	A (N.m)	B (N.m)
MX190015—	(2,5 ~ 75)mm ²	8	/
MX290015—	(10~120)mm ²	10	/
MX390015—	(120~240)mm ²	35	25

■ Cable Connector



Serial No.	Wiring capacity	C(N.m)	D(N.m)	B(N.m)
MX196730—	(16~95)mm ²	10	6	1 hole
MX296730—	(35~240)mm ²	30	11	1 hole
MX296731—	2X(35~120)mm ²	30	11	2 hole
MX296732—	6X(10~35)mm ²	10	11	6 hole
MX396730—	2X(120~240)	35	25	2 hole
MX396731—	4X95mm ²	15	25	4 hole
MX496730—	3X(95~300)mm ²	35	25	3 hole
MX496731—	4X(95~240)mm ²	35	25	4 hole

Note: The terminals may only be loaded with 80% of the authorised rated current of the switch.

Wire ferrules must be used for stranded or fine-stranded conductors.

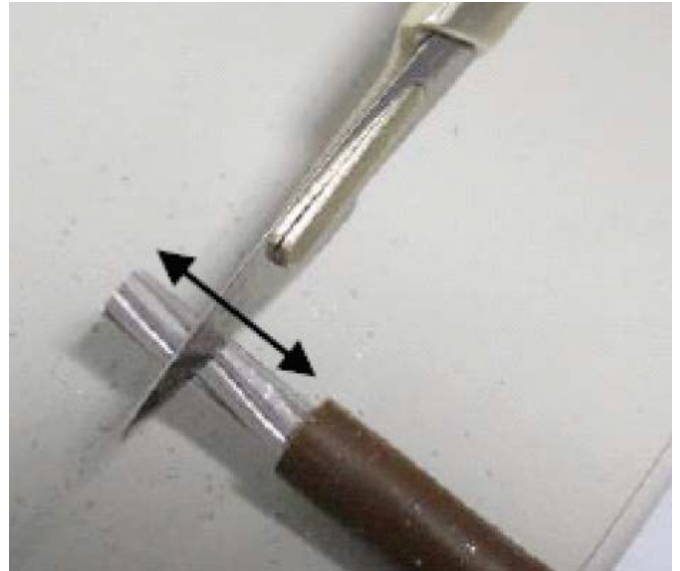
INSTRUCTION MANUAL: TERMINAL BLOCKS FOR ALUMINIUM CONDUCTORS

Installation manual, terminal blocks for aluminium conductors

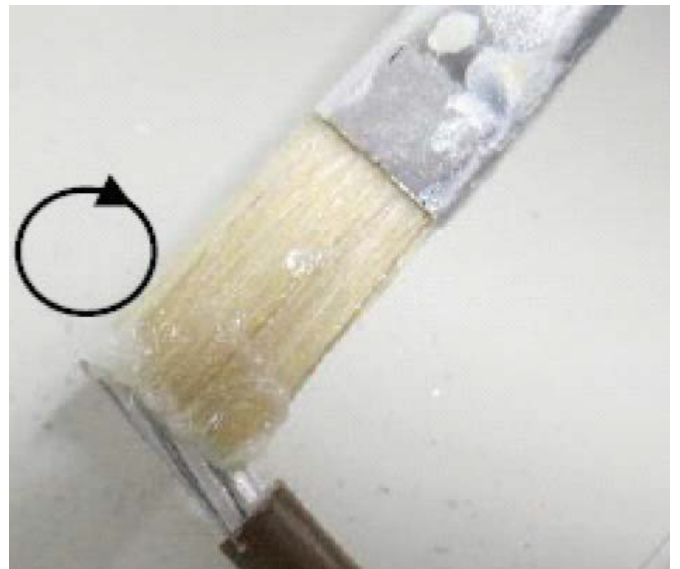
1. Scrape the stripped end of the conductor carefully, eg. with a knife, to remove the layer of oxide.

Caution:

Do not use brushes, files or emery paper because particles of aluminium can be deposited on other conductors.



2. After removing the layer of oxide, coat the end of the conductor immediately with a neutral grease, e.g. acid- and alkali-free Vaseline, and connect it to the terminal immediately.



Repeat the above procedure if at any time the conductor is disconnected and reconnected.

 Maintenance note:

The contact clamps must be tightened after 6-8 weeks

The specified torques must be checked at regular intervals maintenance.

Note: Screw terminals are NOT MAINTENANCE-FREE when using aluminium conductors!

Therefore, the terminal points must be checked regularly. The intervals for maintenance depend on the operating conditions. We recommend measuring the temperature at the contact points, this helps you to optimize the intervals. Schrack Technik recommends the maintenance interval of 1 year