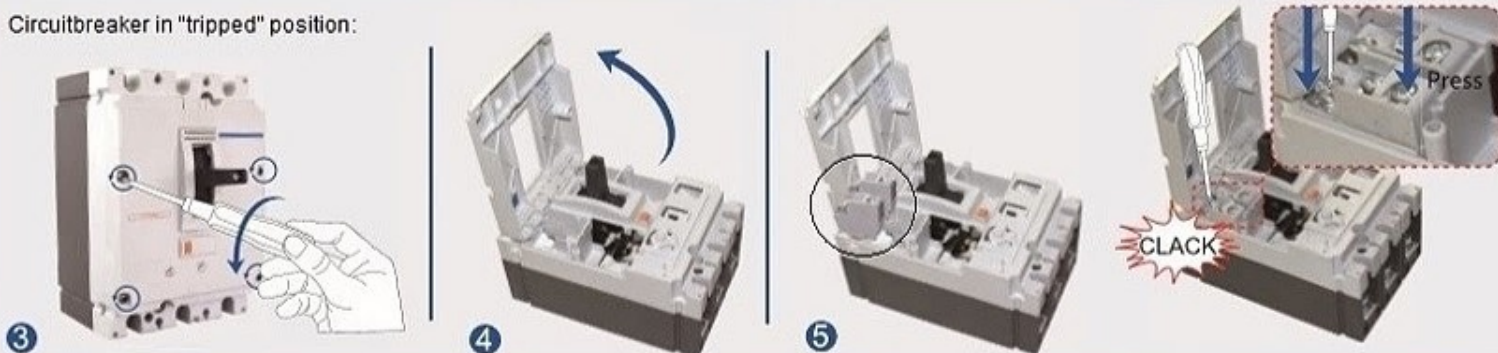


Manual of Inner Accessories for MZ Release units and auxiliary contacts



Circuitbreaker in "tripped" position:



Auxiliary contact

MZAZAN11-- "Normal"

Circuitbreaker in "OFF" position

Circuitbreaker in "ON" position



Auxiliary contact

MZAZAT11-- "Tripped"

Circuitbreaker in "ON" or "OFF" position

Circuitbreaker in "Tripped" position



Circuitbreaker in "tripped" position:

Installing of
Undervoltage release MZ1ZU230
and Shunt releases
MZ. ZS230

5

Installing of Undervoltage release
at MZ2: MZ2/3-U230
Push the handle
lightly towards position "ON"



Installing of Undervoltage release
at MZ3: MZ2/3-U230
Push white lever rod upwards



6



Shunt release

- a) $U_s = 70 \dots 110\% U_n$, reliable operation
 - b) Continuous operation ($> 5s$) is forbidden
- Reacting time: $> 20ms \dots < 60ms$

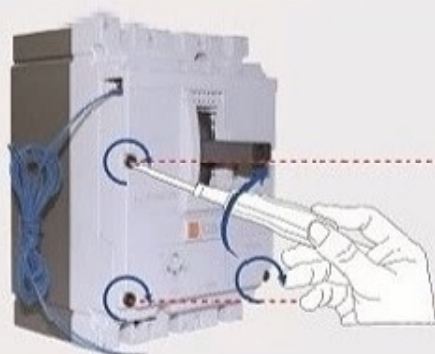


Undervoltage release

- a) $U_s < 35\% U_n$, breaker is switched "OFF"
- b) $U_s > 35 \dots 70\% U_n$, reliable operation
- c) $U_s > 85\% U_n$, breaker can be switched "ON"



7



Type	MZ1/MZ2	MZ3
Torque (Nm)	0.8	1.2

Type	MZ1/MZ2	MZ3
Torque (Nm)	0.6	1.2