

ARTICLE NUMBER

WSA8012309

WSA8012409

WSA1010309

WSA1208409

WSA1210309

WSA1212309

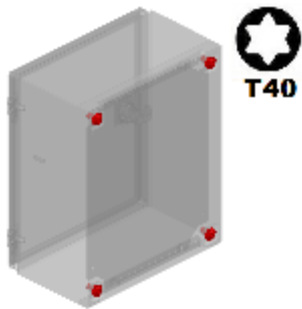
WSA1212409

WSA1410309

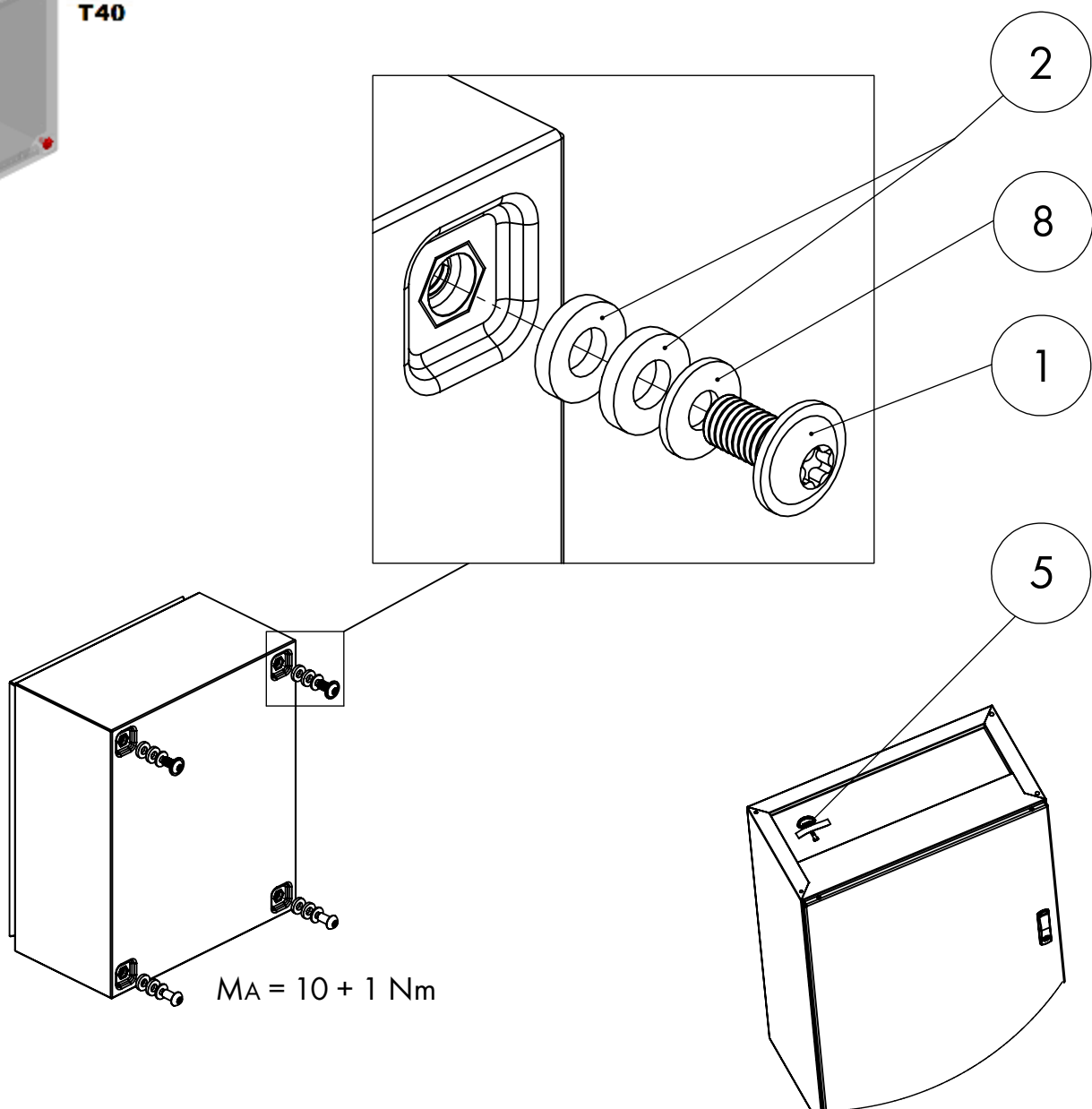
WSA1410409

This product is an empty enclosure for low voltage switch gear applications with maximum rated voltage 1000V AC or 1500V DC for indoor use





GASKET AND BOLT ASSEMBLY



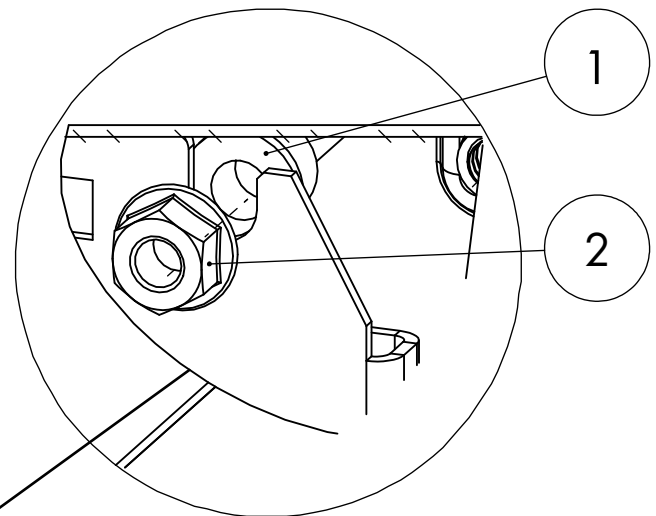
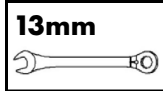
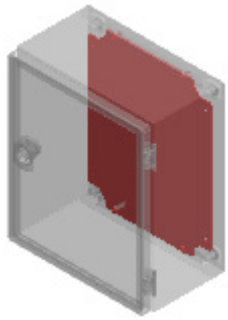
SUPPLY INCLUDES

No.			Pcs.	No.			Pcs.
1		M8x16mm	4	6		M8x15mm	1
2		Gasket Ø16x8mm	8	7		M8	1
3		M6	S: 3 D: 6	8		Flat Washer M8	5
4		M6	S: 3 D: 6	9		Sticker	S: 4 D: 7
5		Double Bit Key	1				

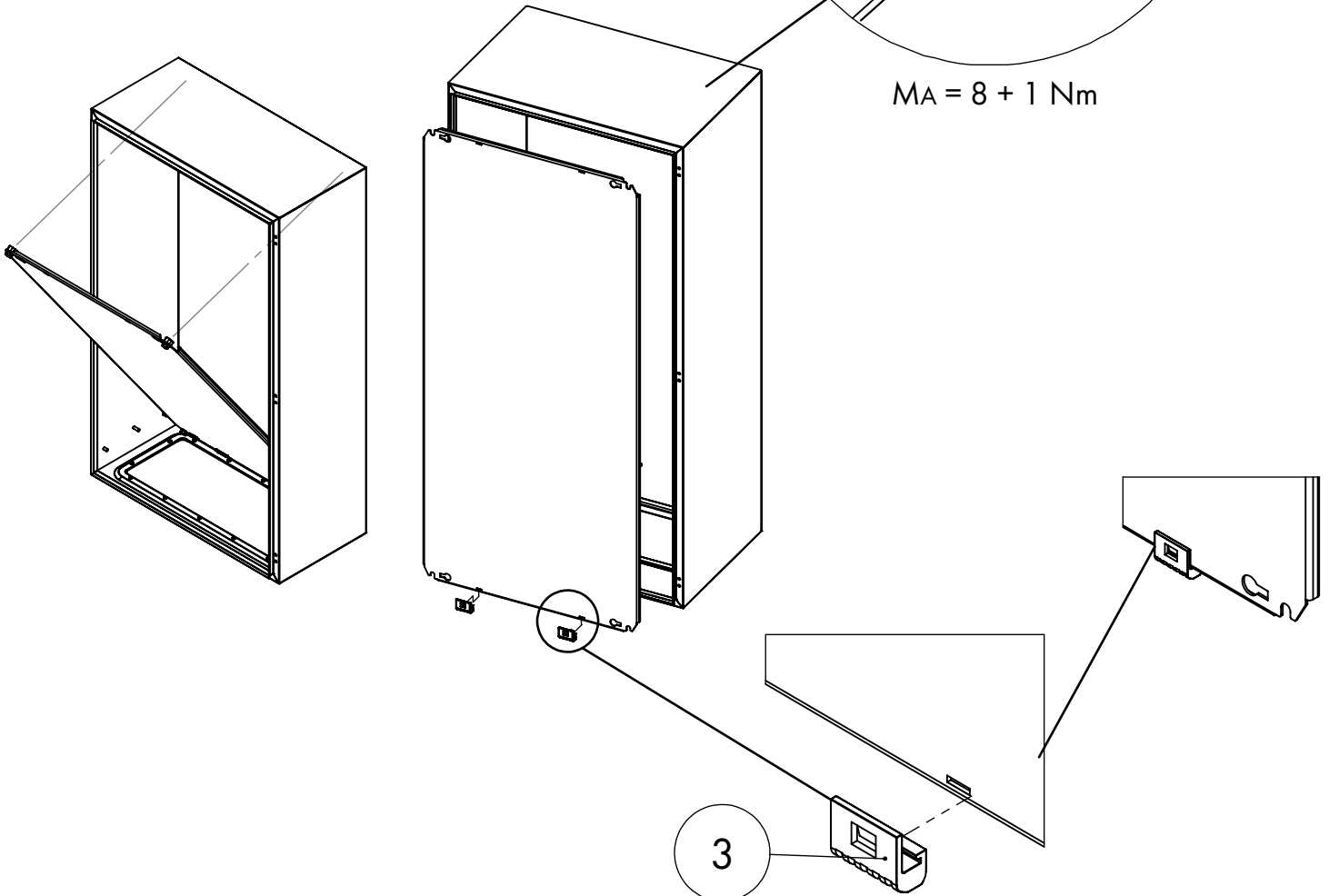
S=Single Door

D=Double Door

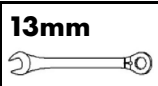
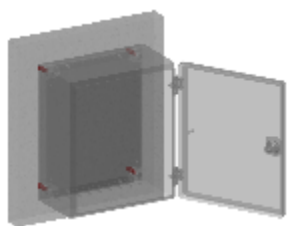
MOUNTING PLATE ASSEMBLY



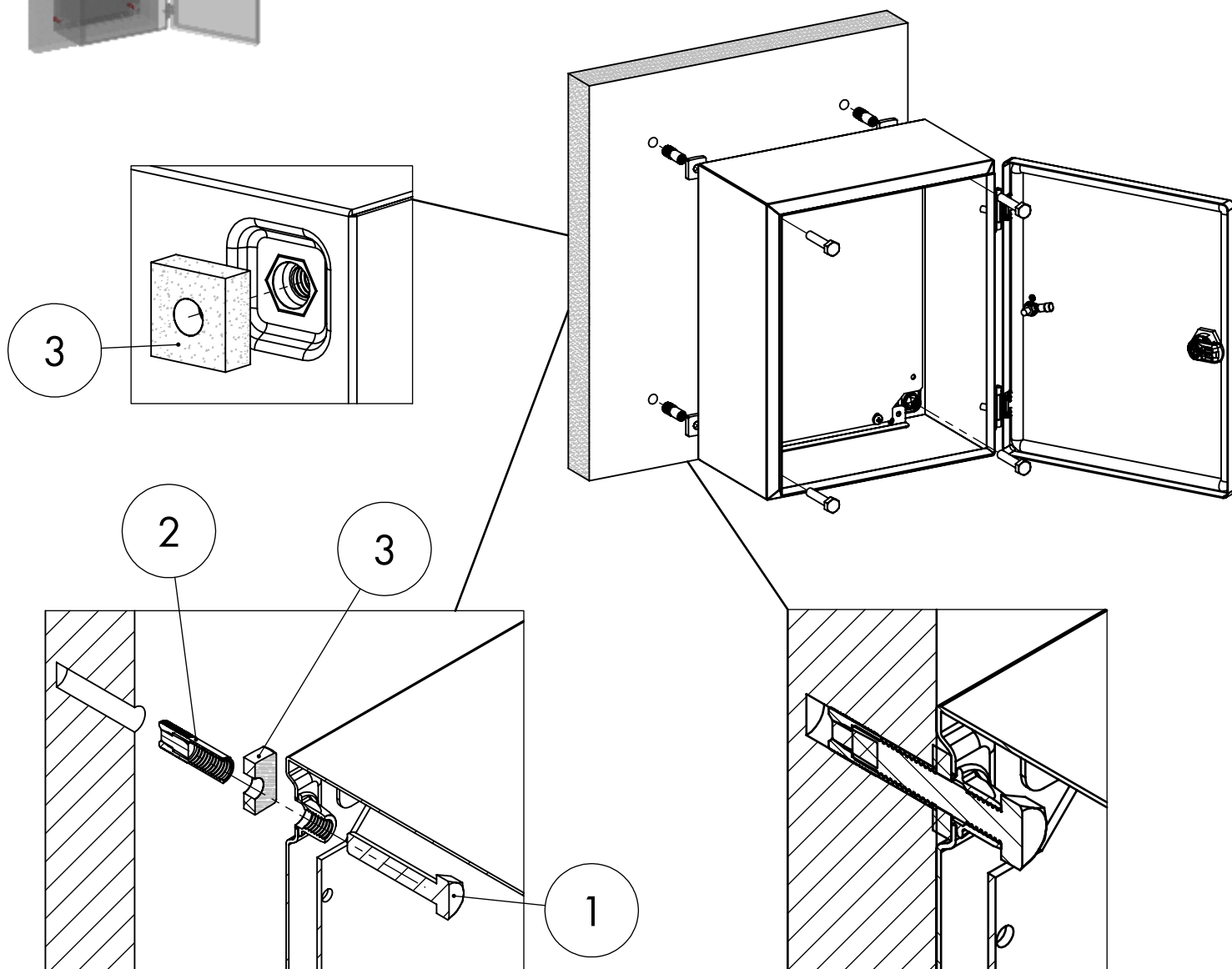
MA = 8 + 1 Nm



No.			Pcs.
1		M8x11 mm	4
2		M8	4
3		Mounting Plate Supporter	2
			From a Width of 1000mm: 3



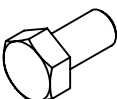

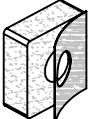
DIRECT MOUNTING

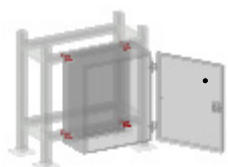


MA = 8 + 1 Nm

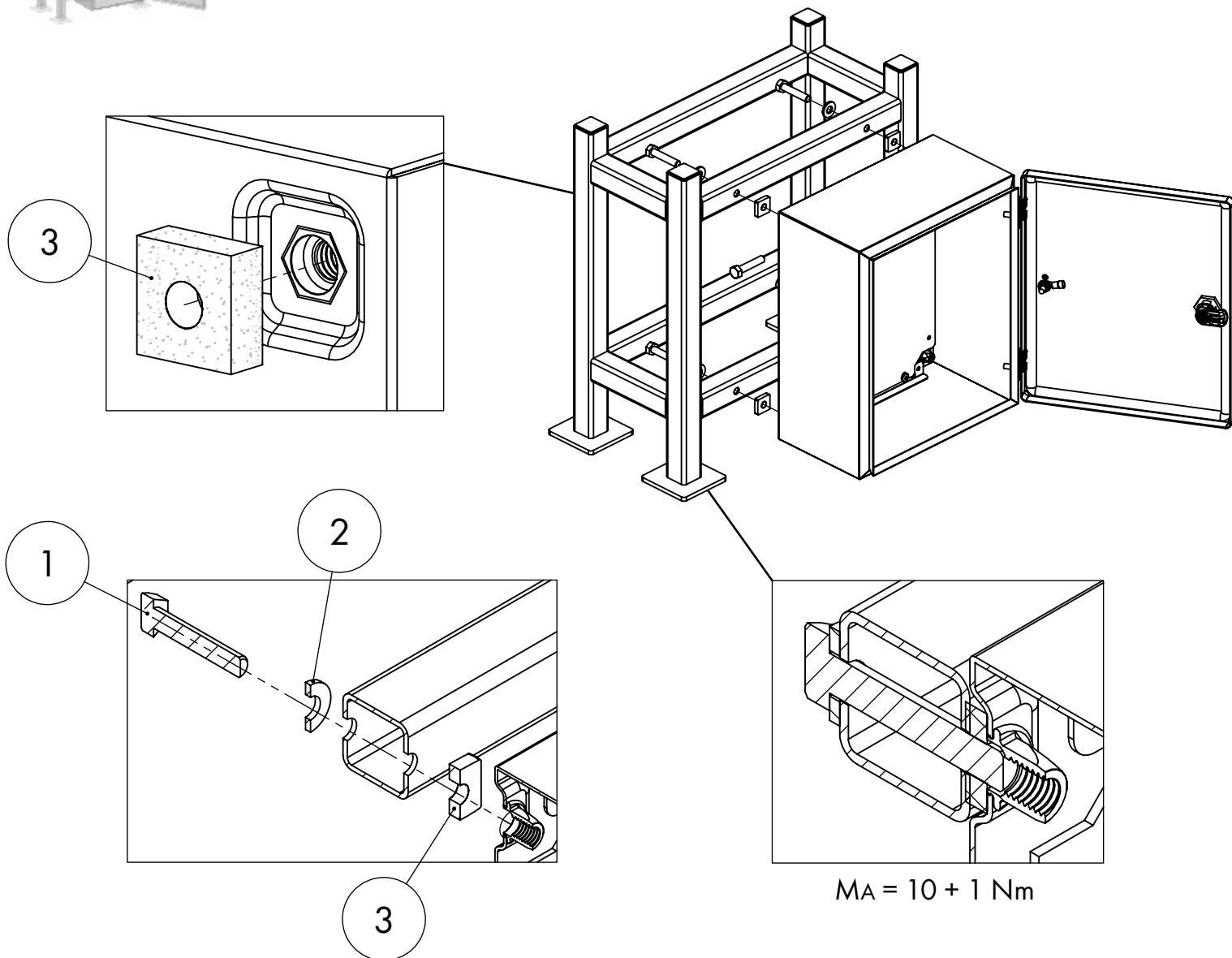


RECOMMENDED PARTS (Not Included in Supply!)

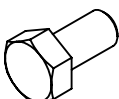

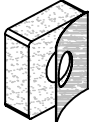
No.			Pcs.
1		M8	4
2		Steel Dowel M8	4
3		Adhesive Gasket	4

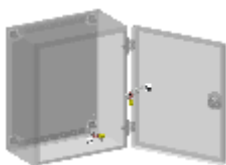

13mm


ASSEMBLY TO PROFILE CONSTRUCTION



RECOMMENDED PARTS (Not Included in Supply!)

No.			Pcs.
1		M8	4
2		Flat Washer M8	4
3		Adhesive Gasket	4



10mm



13mm



EARTHING SYSTEM

