

# INSTALLATION MANUAL

38112C

LED  
BUILT IN

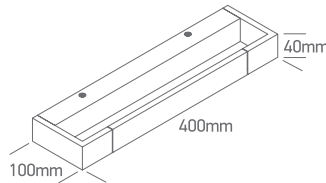


80  
CRI

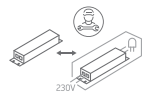
CE ENEC UK



230V | 12W | SMD 2835 | IP44 | Aluminium + acrylic

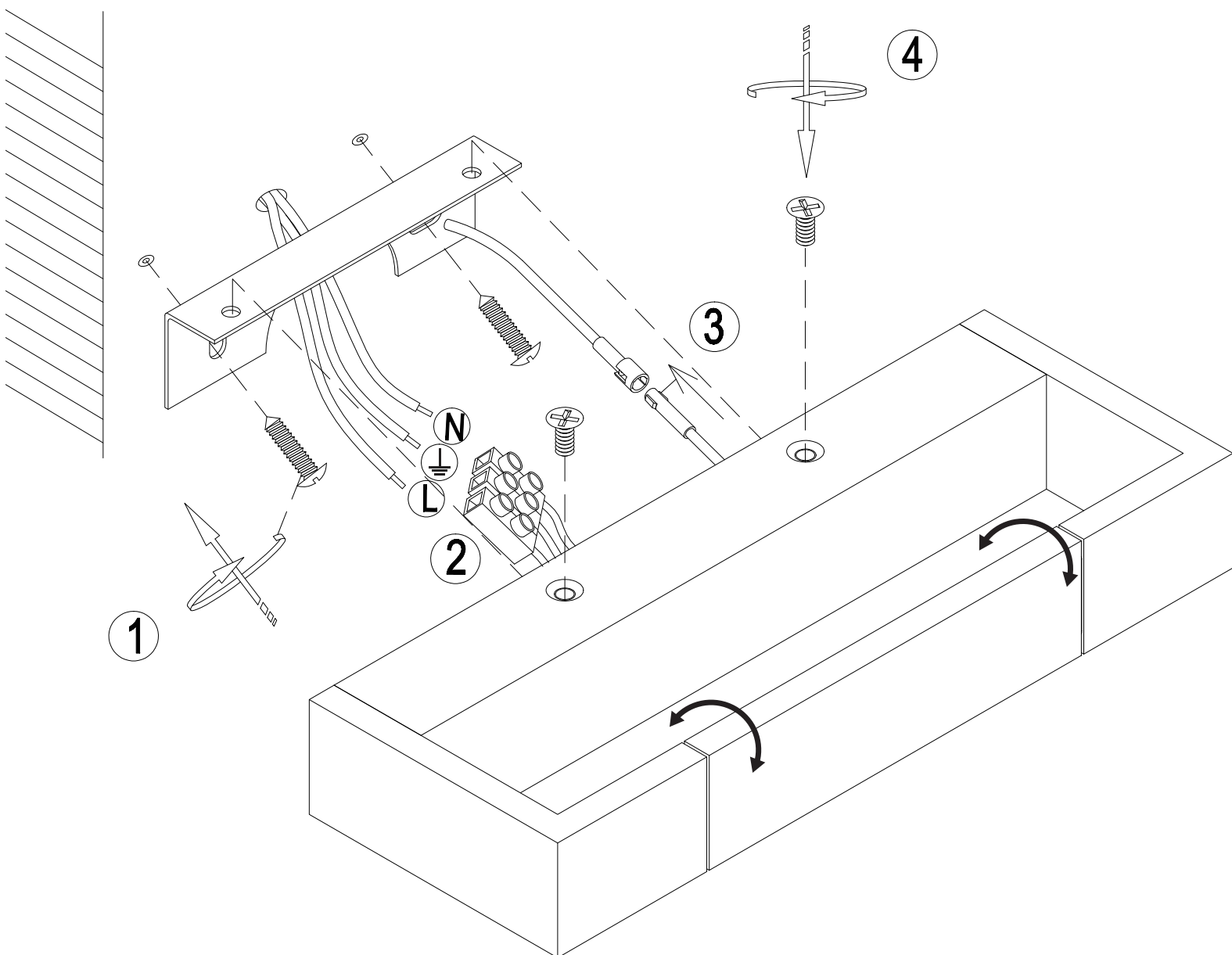


one  
LIGHT



L70B50  
36000 Hrs

Complete with driver 600mA.



## Warnings:

1. Make sure that the product is installed properly before connecting to electricity.
2. Do not cover the fitting.
3. Maintenance and installation should only be carried out by a professional electrician.