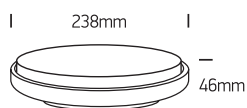


# INSTALLATION MANUAL

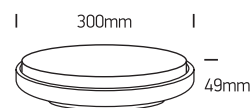
67362, 67363



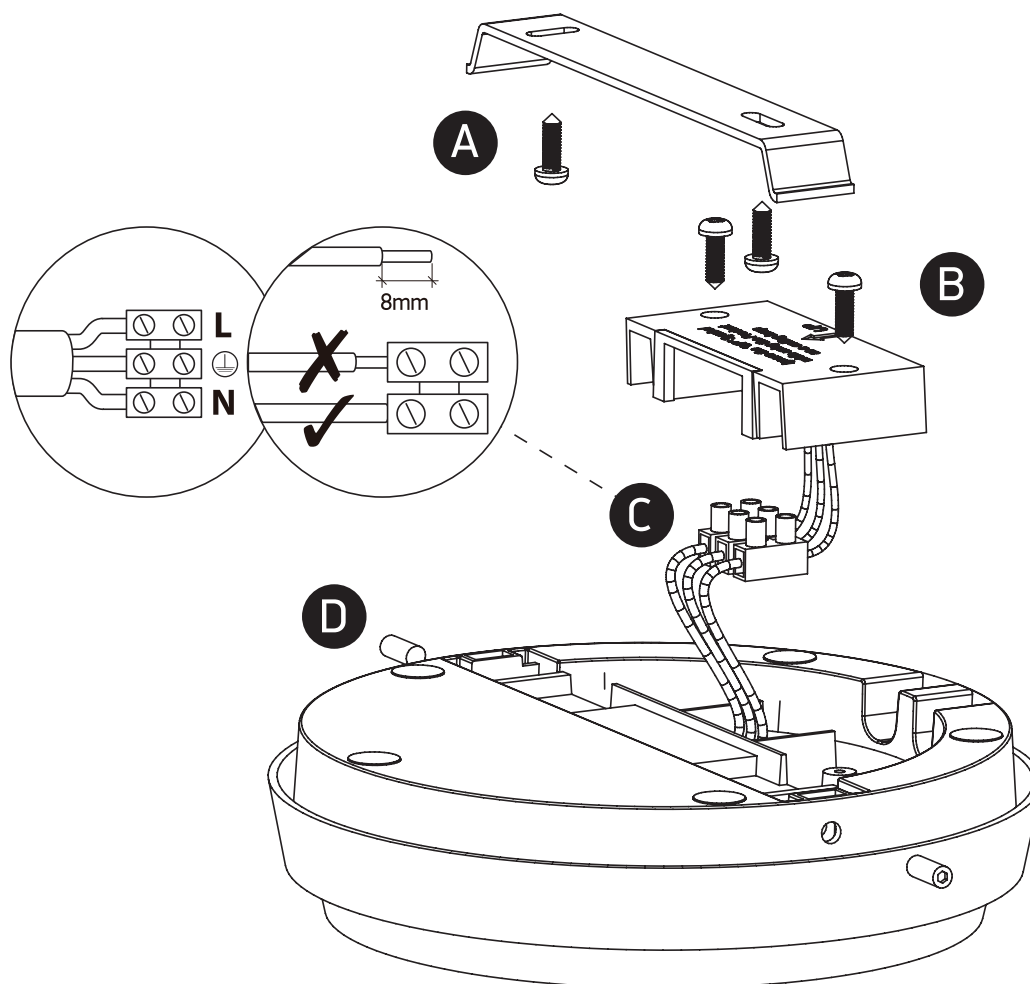
67362: 230V | SMD LED | 20W | IP54 | Die cast



67363: 100-240V | SMD LED | 30W | IP54 | Die cast



Complete with driver



## Warnings:

1. Make sure that the product is installed properly before connecting to electricity.
2. Do not cover the fitting.
3. Maintenance and installation should only be carried out by a professional electrician.