

# INSTALLATION MANUAL

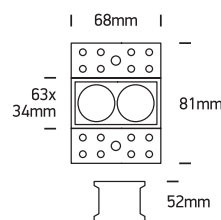
## 50203ATR

**ecolight**



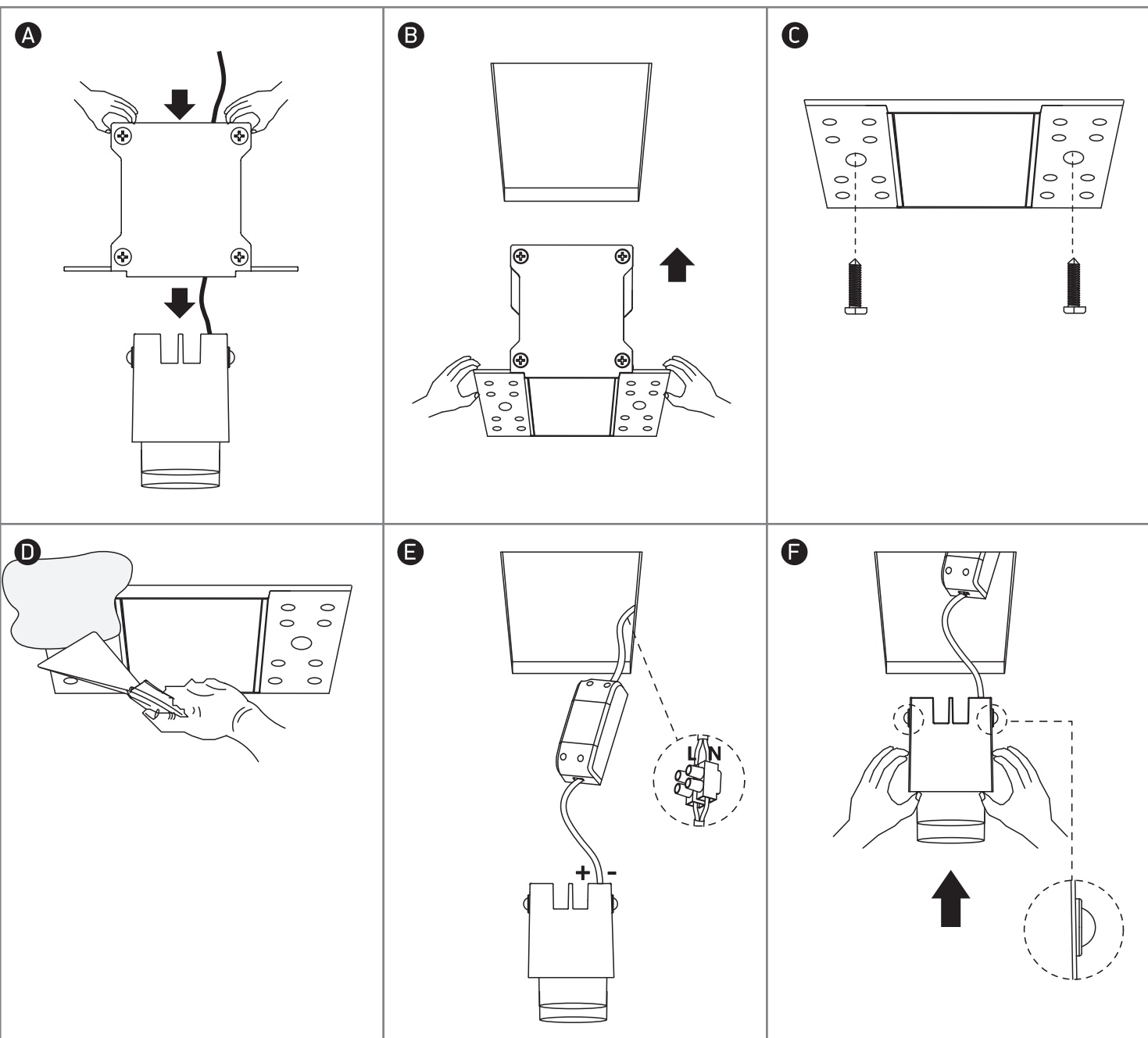
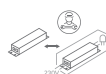
DARK  
LIGHT

85  
CRI



**one**  
LIGHT

230V | SMD 3535 | 6W | IP20 | Trimless | Die cast  
Complete with 700mA driver.



### Warnings:

1. Make sure that the product is installed properly before connecting to electricity.
2. Do not cover the fitting.
3. Maintenance and installation should only be carried out by a professional electrician.