

ASSEMBLY INSTRUCTIONS

- 1- Screw fastening ears (A) in the 4 rear corners of the box.
- 2- Mount eyebolts (B), with their respective fasteners, in a ears (A).
The fastener consist of two nuts and washer M6.
- 3- Threading the strap (C) through the mounted eyebolts.

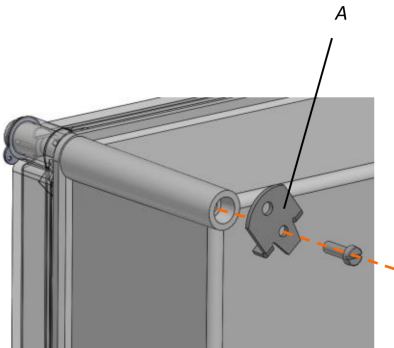


Figure 1

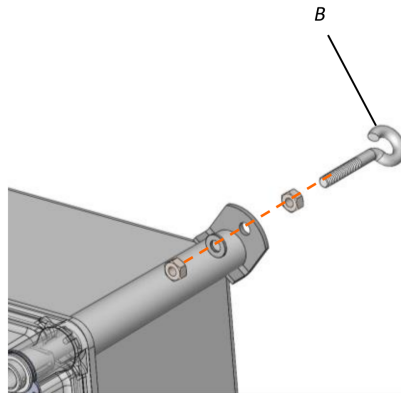


Figure 2

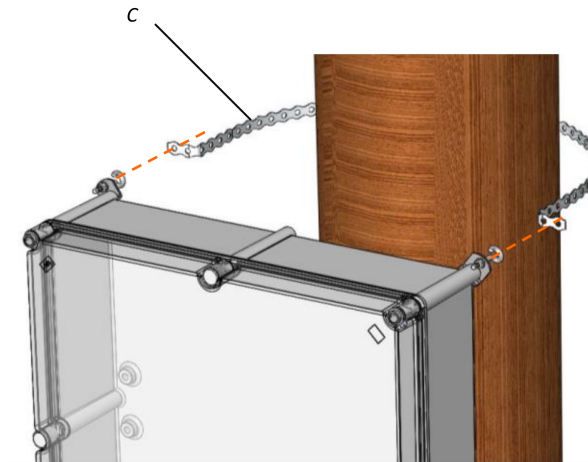


Figure 3



Figure 4