

# INSTALLATION MANUAL

6308D & 6308L

**LED**  
BUILT IN



370mm  
(with 150mm Rod)

**DC 35W**  
MOTOR

**6**  
SPEED



WINTER  
REVERSE MOTOR



REMOTE  
CONTROL

**LIGHT  
ON/OFF  
SWITCH**

**22W  
LED**

**2000  
LUMEN**

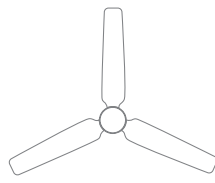
230V | LED 22W | DC MOTOR 35W | IP20 | Metal body | Wood blades | Rod mounted

- Maximum air flow rate 100m³/min
- Service value 2,8/W
- Standby power consumption 0,5W

- Fan sound power level 45dB(A)
- Maximum air velocity 2,6 m/sec.
- Max RPM 185



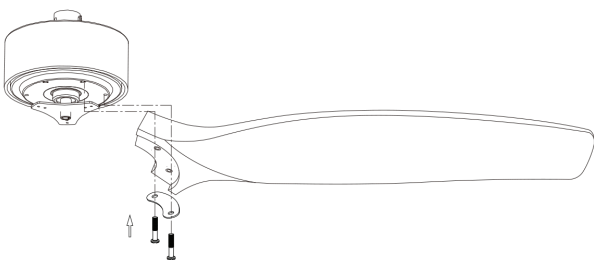
85  
CRI



1320mm

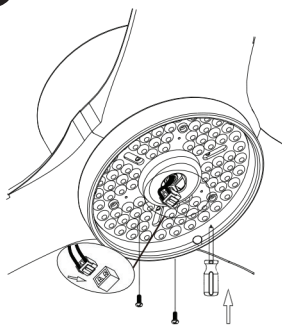
**one**  
LIGHT

1



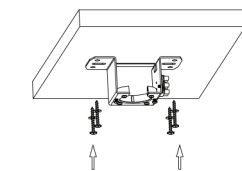
Install the fan blades and tighten screws.

2

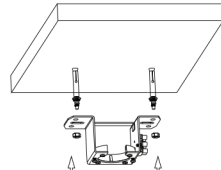


Install LED plate and connect cable.

3

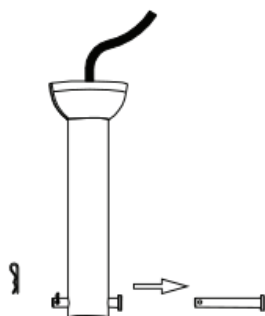


3a



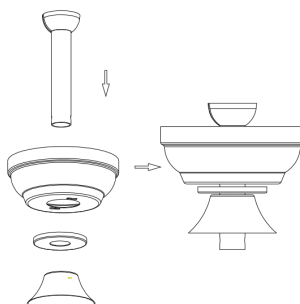
Install ceiling bracket.

4



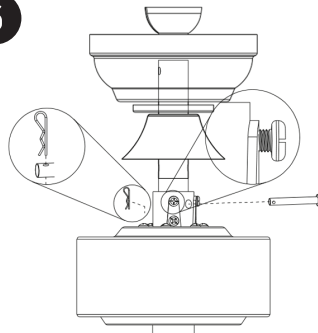
Remove the R clip from the pin. Then remove the pin from the rod.

5



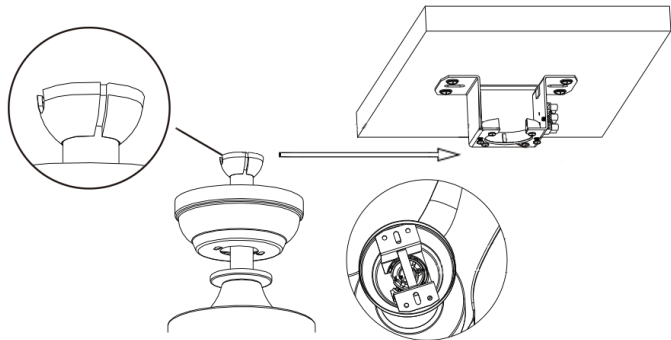
- A Place the parts on the rod.
- B Pass wires through rod.

6



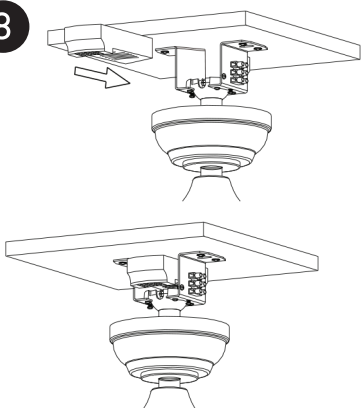
- A Put the rod into the motor and install the pin and R clip.
- B Tighten all the nuts and screws.

7



Hang the fan onto the ceiling bracket.

8



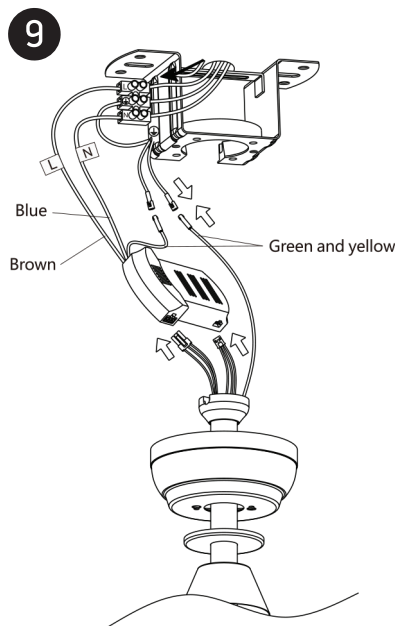
Place the receiver on the hanger bracket.

## Warnings:

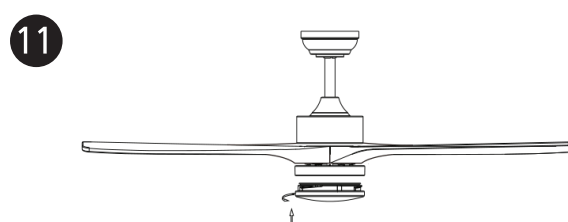
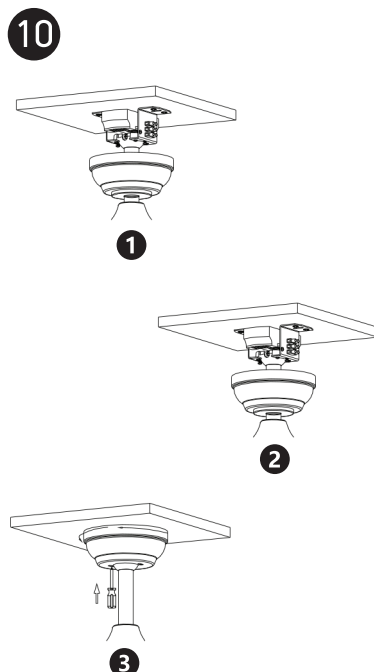
1. Make sure that the product is installed properly before connecting to electricity.
2. Maintenance and installation should only be carried out by a professional electrician.

[www.1-light.eu](http://www.1-light.eu)

## 6308D & 6308L

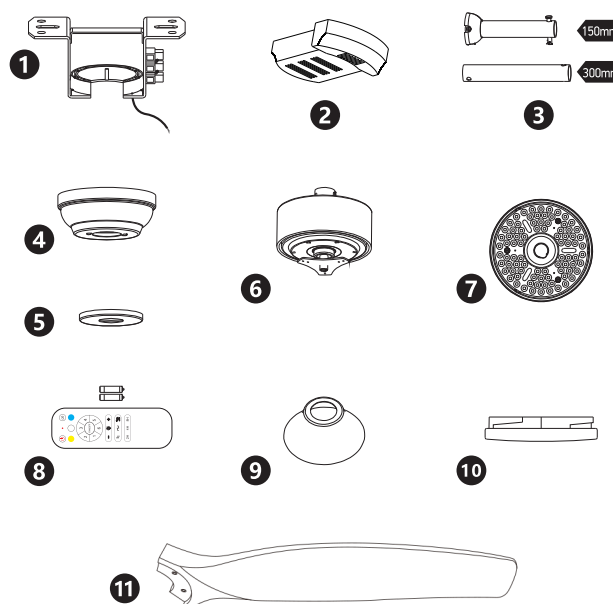


### Connect wires.



Install the diffuser onto the LED plate.

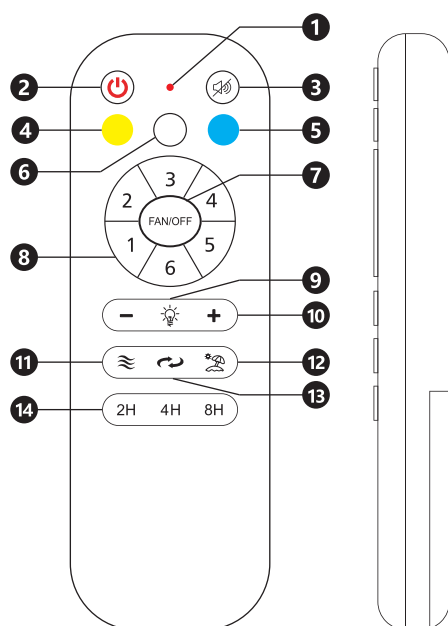
## PACKAGE CONTENTS



## REMOTE CONTROL

Requires 2xAAA batteries. Remove batteries if not used for long period of time.

- ❶ LED indicator
- ❷ ON/OFF
- ❸ Mute sound
- ❹ Warm white LED
- ❺ Cool white LED
- ❻ Daylight LED
- ❼ Fan OFF
- ❽ Fan speeds: To turn fan ON 1(lowest) to 6 (highest)
- ❾ LED light ON / OFF
- ❿ LED dimmer
- ⓫ Breeze: Fan speeds automatic cycle between 1 to 6
- ⓬ Vacation mode: Switch on the light kit  
5 minutes each 2 hours
- ⓭ Reverse function for winter and summer
- ⓮ Timer: Fan stops after 2h/4h/8h



- 1 Hanger bracket
- 2 Receiver
- 3 Rod assembly
- 4 Canopy
- 5 Canopy cover
- 6 Motor
- 7 22W LED
- 8 Remote control + holder  
+2 mounting screws  
+1.5V (AAA)x2 batteries
- 9 Cover
- 10 Diffuser
- 11 Fan blades (3pcs)
- A Screws for blades
- B Mounting hardware
- C Blade balancing kit

**NOTE:** When switching mains ON, light automatically turns on.

### Warnings:

1. Make sure that the product is installed properly before connecting to electricity.
2. Maintenance and installation should only be carried out by a professional electrician.