

# INSTALLATION MANUAL

6310

**LED**  
BUILT IN



350mm  
(with 150mm Rod)

**DC 35W**  
MOTOR MOTOR

**6**  
SPEED



WINTER  
REVERSE MOTOR



REMOTE  
CONTROL

**LIGHT**  
ON/OFF  
SWITCH

**22W**  
LED

**2000**  
LUMEN

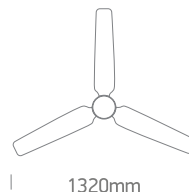
230V | LED 22W | DC MOTOR 35W | IP20 | Metal body | Wood blades | Rod mounted

· Maximum air flow rate 100m<sup>3</sup>/min  
· Service value 2,8/W  
· Standby power consumption 0,5W

· Fan sound power level 45dB(A)  
· Maximum air velocity 2,6 m/sec.  
· Max RPM 175

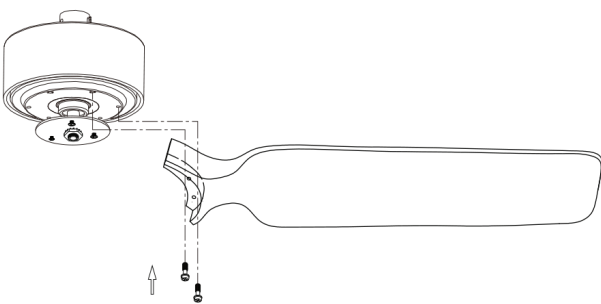


**85**  
CRI



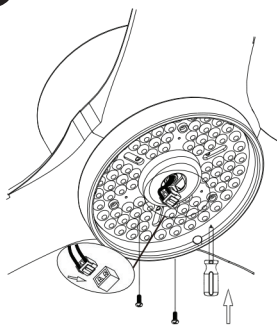
**one**  
LIGHT

**1**



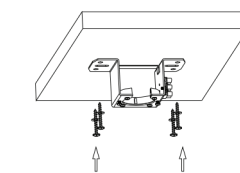
Install the fan blades and tighten screws.

**2**

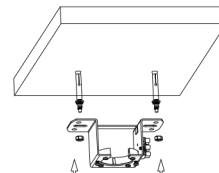


Install LED plate and connect cable.

**3**

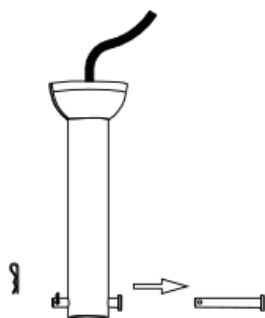


**3a**



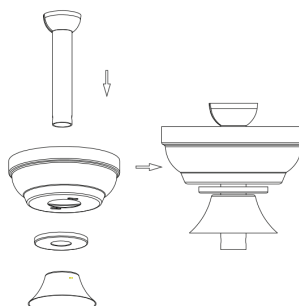
Install ceiling bracket.

**4**



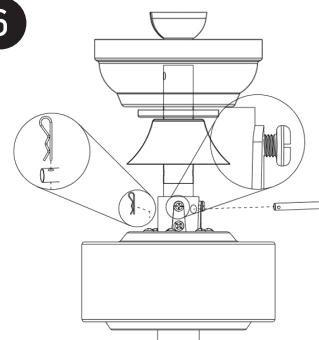
Remove the R clip from the pin. Then remove the pin from the rod.

**5**



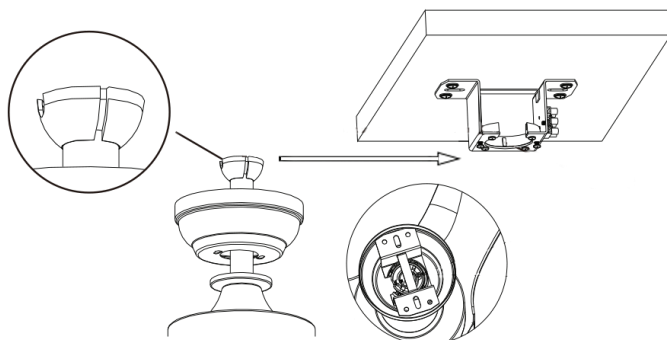
- A** Place the parts on the rod.  
**B** Pass wires through rod.

**6**



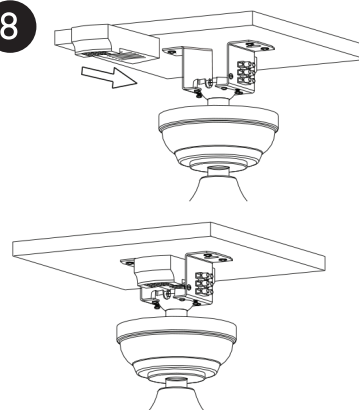
- A** Put the rod into the motor and install the pin and R clip.  
**B** Tighten all the nuts and screws.

**7**



Hang the fan onto the ceiling bracket.

**8**



Place the receiver on the hanger bracket.

## Warnings:

1. Make sure that the product is installed properly before connecting to electricity.
2. Maintenance and installation should only be carried out by a professional electrician.

[www.1-light.eu](http://www.1-light.eu)

6310



- ① LED indicator
- ② ON/OFF
- ③ Mute sound
- ④ Warm white LED
- ⑤ Cool white LED
- ⑥ Daylight LED
- ⑦ Fan OFF
- ⑧ Fan speeds: To turn fan ON 1(lowest) to 6 (highest)
- ⑨ LED light ON / OFF
- ⑩ LED dimmer
- ⑪ Breeze: Fan speeds automatic cycle between 1 to 6
- ⑫ Vacation mode: Switch on the light kit  
5 minutes each 2 hours
- ⑬ Reverse function for winter and summer
- ⑭ Timer: Fan stops after 2h/4h/8h

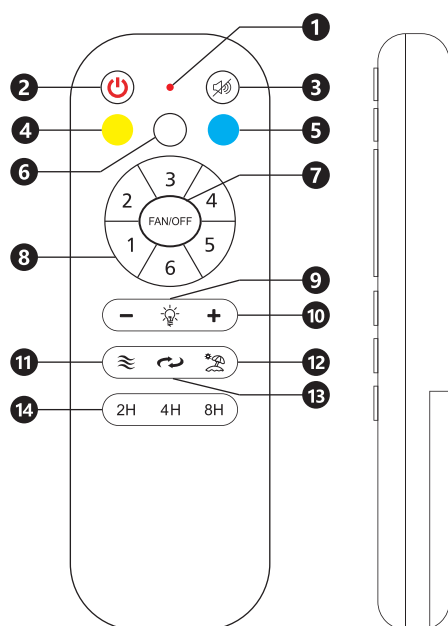


Diagram illustrating the components of the Philips SH6500 shaver, numbered 1 through 11:

1. Shaver head assembly with pop-up trimmer.
2. Protective cap for the shaver head.
3. Two types of shaver foils: 150mm and 300mm.
4. Shaver body (main handle).
5. Shaver head cap.
6. Shaver head cap with pop-up trimmer.
7. Shaver head cap with pop-up trimmer (alternative view).
8. Shaver body with pop-up trimmer.
9. Shaver head cap with pop-up trimmer (alternative view).
10. Shaver head cap with pop-up trimmer (alternative view).
11. Shaver head cap with pop-up trimmer (alternative view).



- 1 Hanger bracket
- 2 Receiver
- 3 Rod assembly
- 4 Canopy
- 5 Canopy cover
- 6 Motor
- 7 22W LED
- 8 Remote control + holder  
+2 mounting screws  
+1.5V (AAA)x2 batteries
- 9 Cover
- 10 Diffuser
- 11 Fan blades (3pcs)
- A Screws for blades
- B Mounting hardware
- C Blade balancing kit

[www.1-light.eu](http://www.1-light.eu)