

INSTALLATION MANUAL

6310C

LED
BUILT IN



270mm

DC 35W
MOTOR

6
SPEED



WINTER
REVERSE MOTOR



REMOTE
CONTROL

**LIGHT
ON/OFF
SWITCH**

**22W
LED**

**2000
LUMEN**

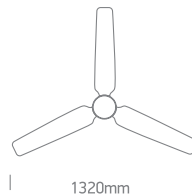
230V | LED 22W | DC MOTOR 35W | IP20 | Metal body | Wood blades | Ceiling mounted

- Maximum air flow rate 100m³/min
- Service value 5/W
- Standby power consumption 0,5W

- Fan sound power level 45dB(A)
- Maximum air velocity 2,6 m/sec.
- Max RPM 175



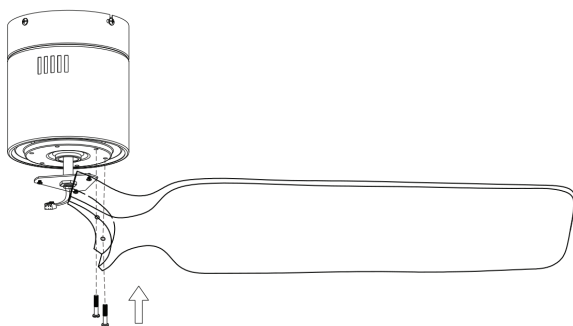
85
CRI



1320mm

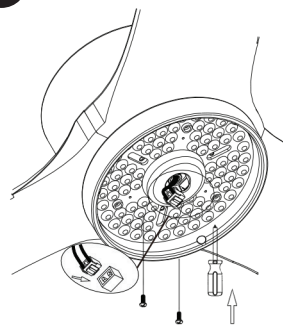
one
LIGHT

1



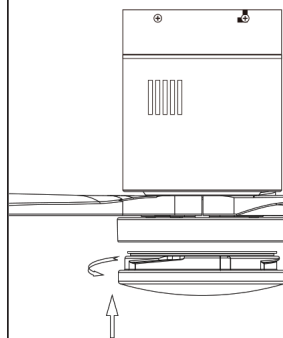
Install the fan blades and tighten screws.

2



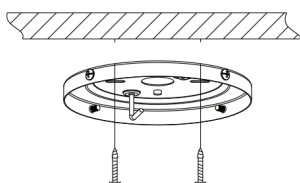
Install LED plate and connect cable.

3



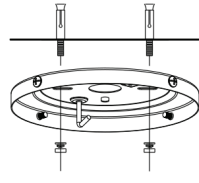
Install the diffuser onto the LED plate.

4

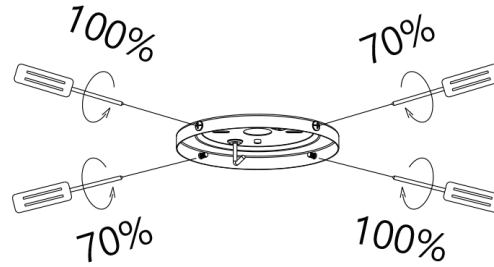


Install ceiling bracket.

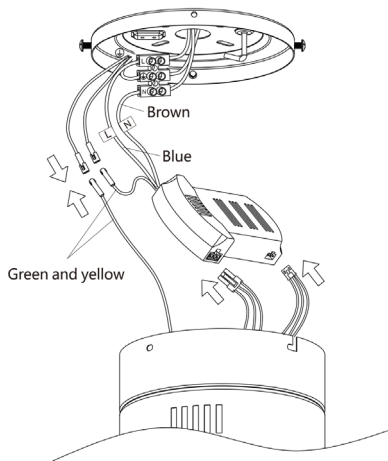
4a



5

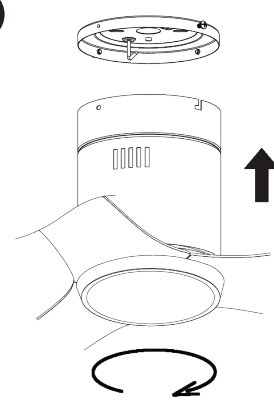


6

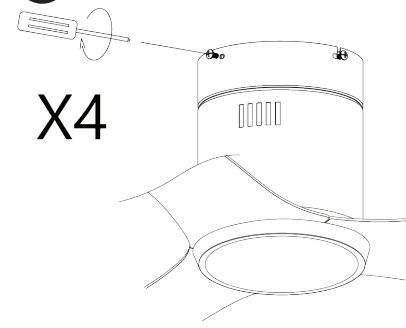


Connect wires.

7



8



Warnings:

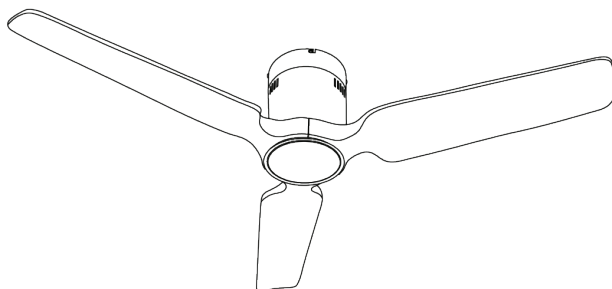
- Make sure that the product is installed properly before connecting to electricity.
- Maintenance and installation should only be carried out by a professional electrician.

www.1-light.eu

INSTALLATION MANUAL

6310C

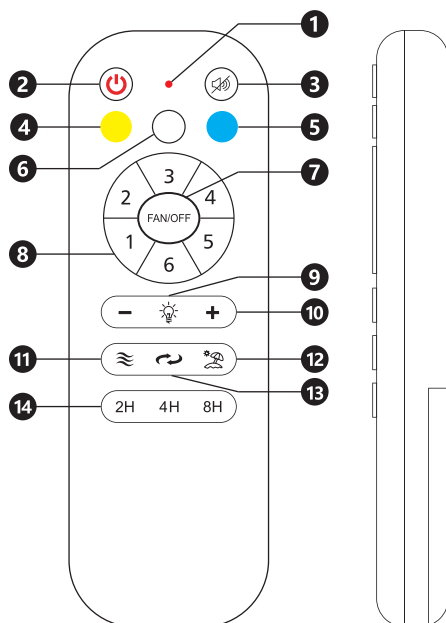
9



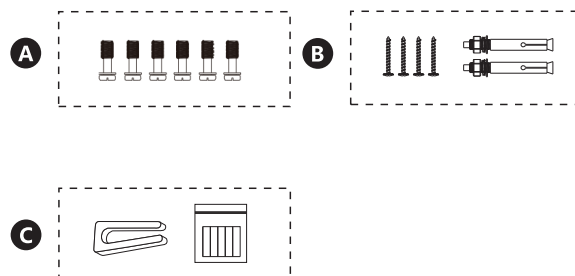
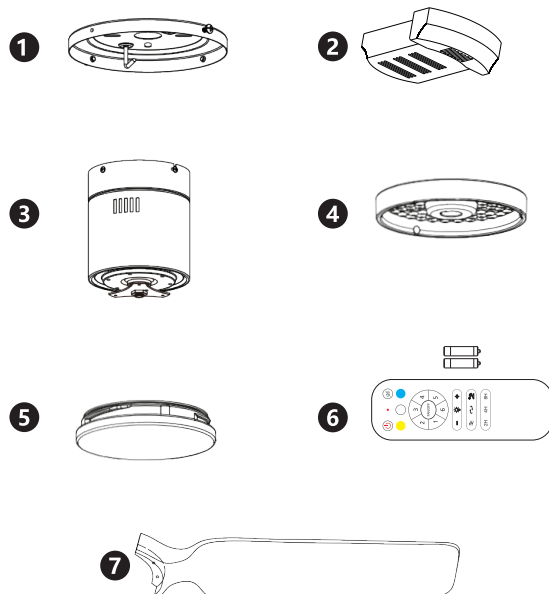
REMOTE CONTROL

Requires 2xAAA batteries. Remove batteries if not used for long period of time.

- ① LED indicator
- ② ON/OFF
- ③ Mute sound
- ④ Warm white LED
- ⑤ Cool white LED
- ⑥ Daylight LED
- ⑦ Fan OFF
- ⑧ Fan speeds: To turn fan ON 1(lowest) to 6 (highest)
- ⑨ LED light ON / OFF
- ⑩ LED dimmer
- ⑪ Breeze: Fan speeds automatic cycle between 1 to 6
- ⑫ Vacation mode: Switch on the light kit
5 minutes each 2 hours
- ⑬ Reverse function for winter and summer
- ⑭ Timer: Fan stops after 2h/4h/8h



PACKAGE CONTENTS



- ① Mounting bracket
- ② Receiver
- ③ Motor
- ④ 22W LED
- ⑤ Diffuser
- ⑥ Remote control + holder
+2 mounting screws
+1.5V (AAA)x2 batteries
- ⑦ Fan blades (3pcs)
- A Screws for blades
- B Mounting hardware
- C Blade balancing kit

NOTE: When switching mains ON, light automatically turns on.

Warnings:

- 1. Make sure that the product is installed properly before connecting to electricity.
- 2. Maintenance and installation should only be carried out by a professional electrician.