

INSTALLATION MANUAL

6312D & 6312L

LED
BUILT IN



350mm
(with 150mm Rod)

DC 25W
MOTOR

6
SPEED



WINTER
REVERSE MOTOR



REMOTE
CONTROL

LIGHT
ON/OFF
SWITCH

22W
LED

2000
LUMEN

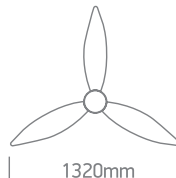
230V | LED 22W | DC MOTOR 25W | IP20 | Metal body | Wood blades | Rod mounted

· Maximum air flow rate 85m³/min
· Service value 3,4/W
· Standby power consumption 0,5W

· Fan sound power level 45dB(A)
· Maximum air velocity 2,3 m/sec.
· Max RPM 185



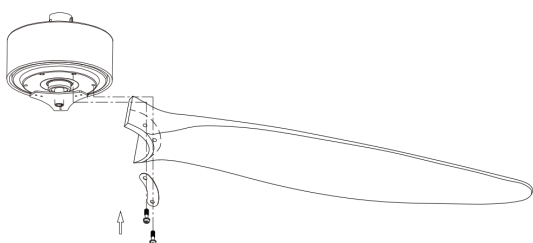
85
CRI



1320mm

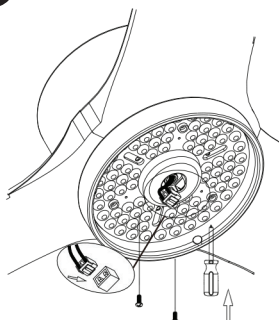
one
LIGHT

1



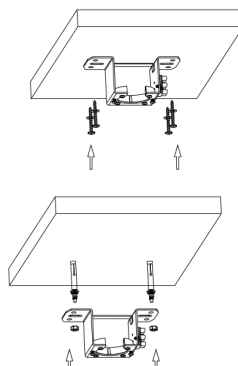
Install the fan blades and tighten screws.

2



Install LED plate and connect cable.

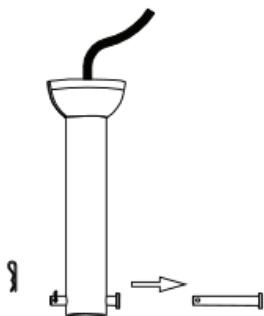
3



3a

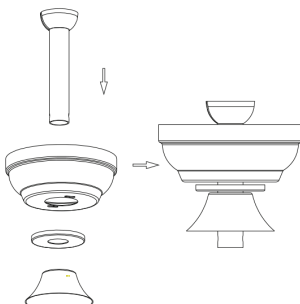
Install ceiling bracket.

4



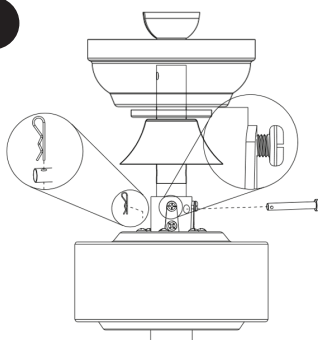
Remove the R clip from the pin. Then remove the pin from the rod.

5



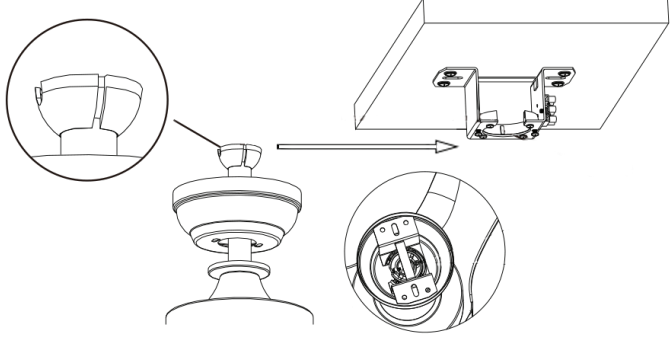
- A Place the parts on the rod.
- B Pass wires through rod.

6



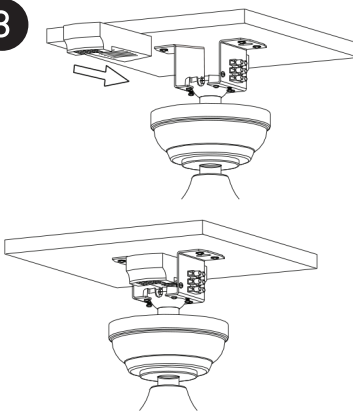
- A Put the rod into the motor and install the pin and R clip.
- B Tighten all the nuts and screws.

7



Hang the fan onto the ceiling bracket.

8



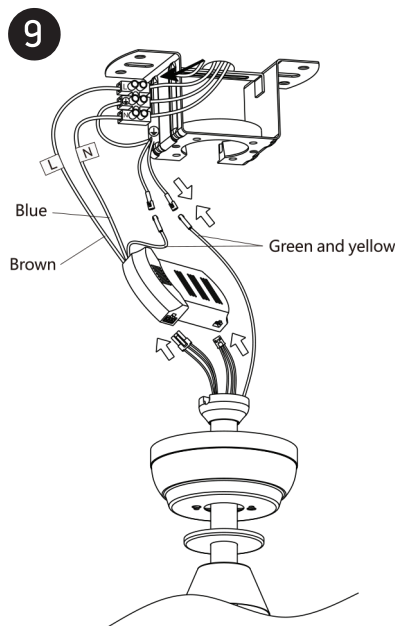
Place the receiver on the hanger bracket.

Warnings:

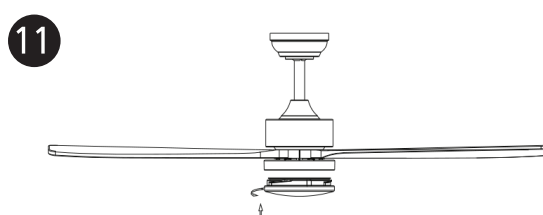
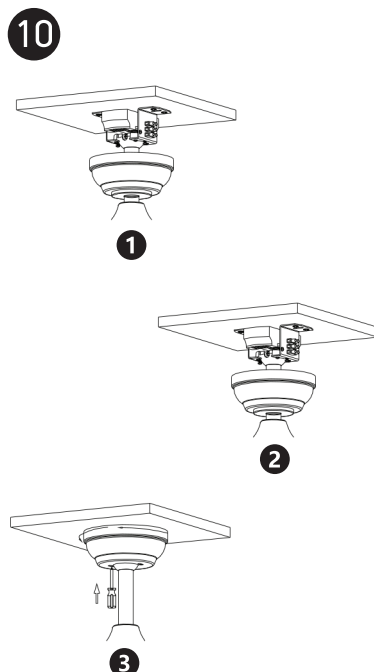
1. Make sure that the product is installed properly before connecting to electricity.
2. Maintenance and installation should only be carried out by a professional electrician.

www.1-light.eu

6312D & 6312L

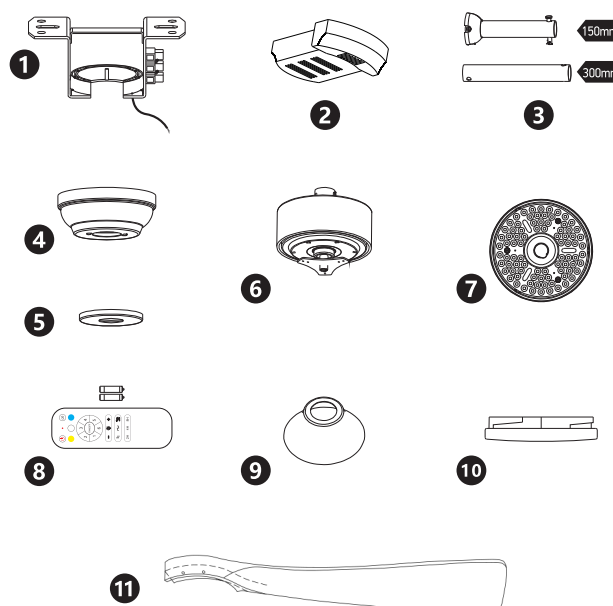


Connect wires.



Install the diffuser onto the LED plate.

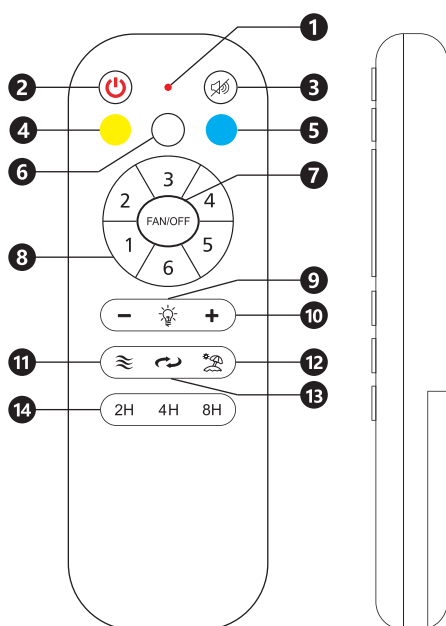
PACKAGE CONTENTS



REMOTE CONTROL

Requires 2xAAA batteries. Remove batteries if not used for long period of time.

- ① LED indicator
- ② ON/OFF
- ③ Mute sound
- ④ Warm white LED
- ⑤ Cool white LED
- ⑥ Daylight LED
- ⑦ Fan OFF
- ⑧ Fan speeds: To turn fan ON 1(lowest) to 6 (highest)
- ⑨ LED light ON / OFF
- ⑩ LED dimmer
- ⑪ Breeze: Fan speeds automatic cycle between 1 to 6
- ⑫ Vacation mode: Switch on the light kit
5 minutes each 2 hours
- ⑬ Reverse function for winter and summer
- ⑭ Timer: Fan stops after 2h/4h/8h



- 1 Hanger bracket
- 2 Receiver
- 3 Rod assembly
- 4 Canopy
- 5 Canopy cover
- 6 Motor
- 7 22W LED
- 8 Remote control + holder
+2 mounting screws
+1.5V (AAA)x2 batteries
- 9 Cover
- 10 Diffuser
- 11 Fan blades (3pcs)
- A Screws for blades
- B Mounting hardware
- C Blade balancing kit

NOTE: When switching mains ON, light automatically turns on.

Warnings:

1. Make sure that the product is installed properly before connecting to electricity.
2. Maintenance and installation should only be carried out by a professional electrician.