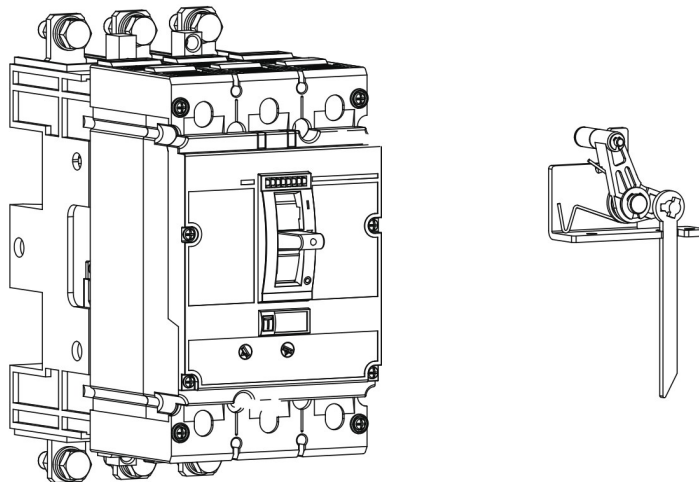


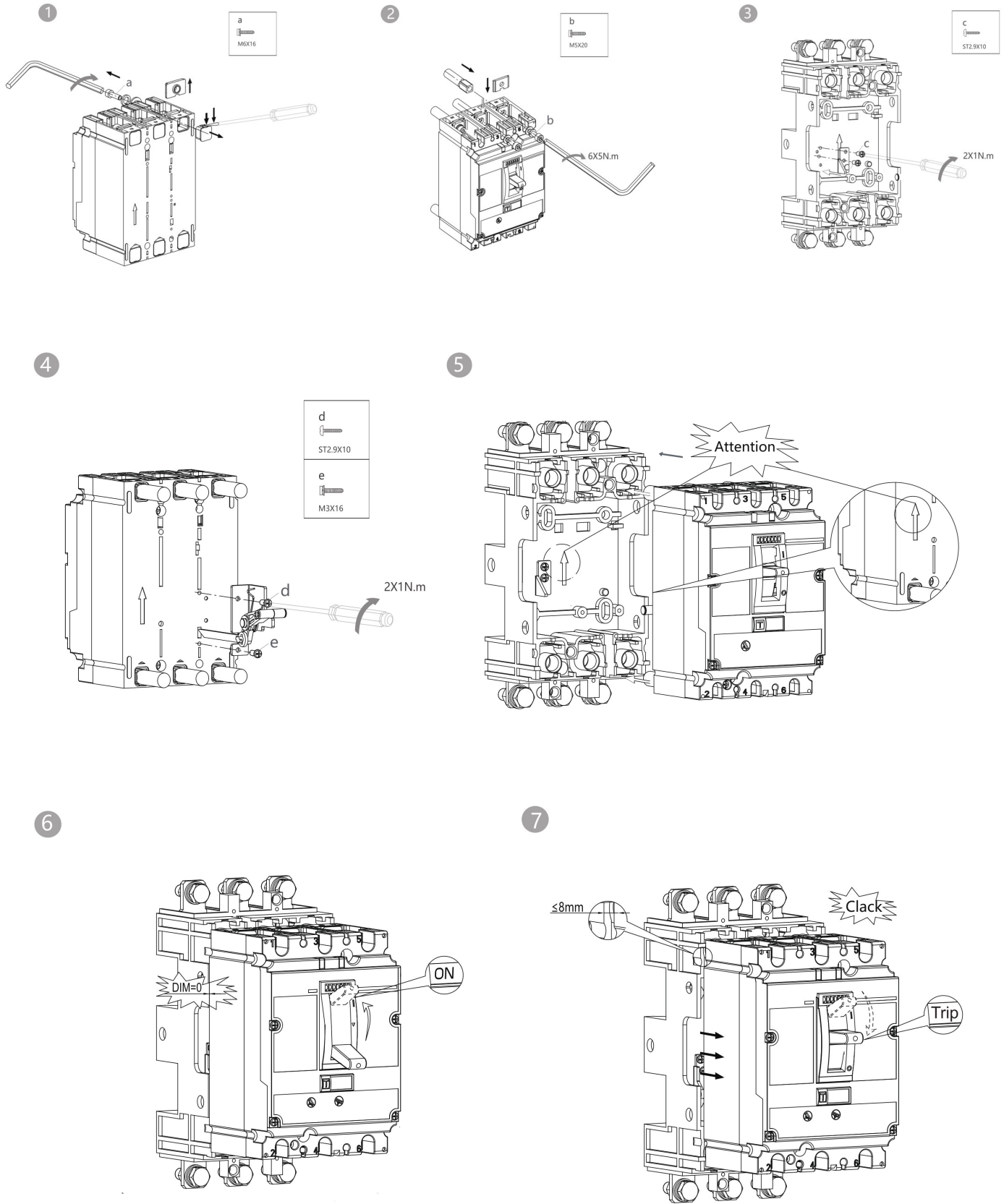
MX Plug-in Base/Plug-in Safety Device

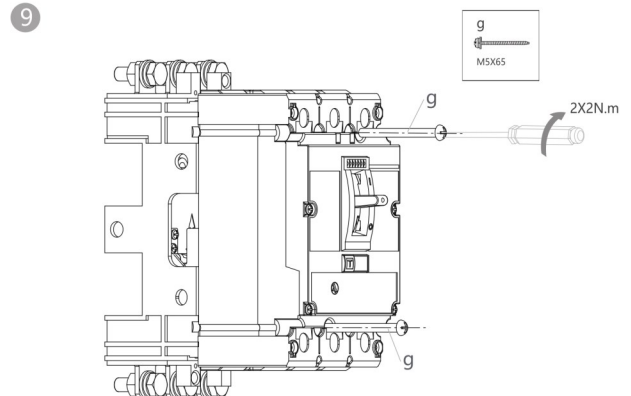
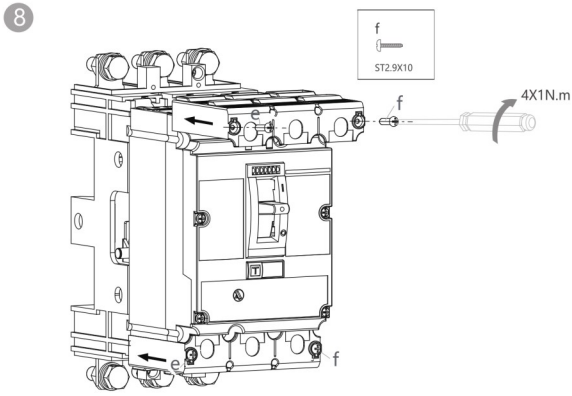
User Manual



Danger, installation and use by electricians only.







1. If you need to install plug-in safety device, you need to purchase separately;
2. If no plug-in safety device is required, the installation steps are as follows:
①②⑤⑧⑨

TYPE	MCCB
MX196871—	MX1XXX31—
MX196872—	MX1XXX41—
MX196873—	MX1XXX31— MX1XXX41—

TYPE	MCCB
MX296871—	MX2XXX3X—
MX296872—	MX2XXX4X—
MX296873—	MX2XXX1—
MX296874—	MX2XXX2— MX2XXX7— MX2XXX3—

TYPE	MCCB
MX396871—	MX3XXX3X—
MX396872—	MX3XXX4X—
MX396873—	MX3XXX1—
MX396874—	MX3XXX2— MX3XXX7— MX3XXX3—