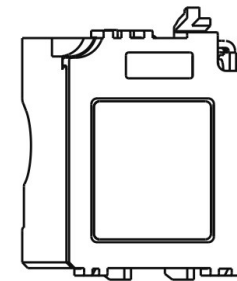
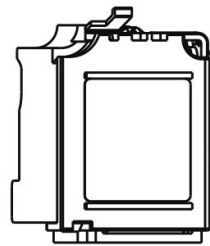


MX Shunt release

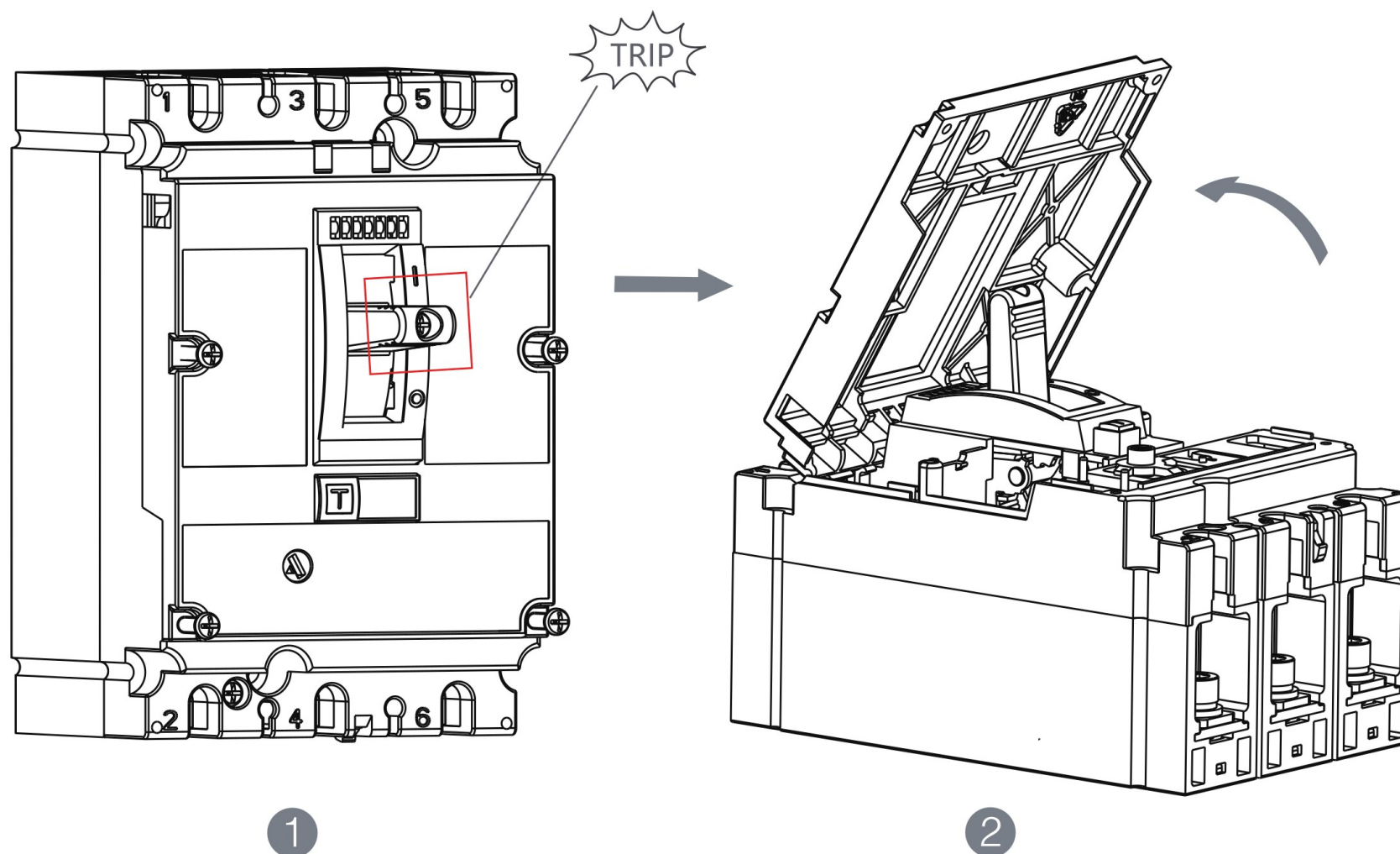
MX Undervoltage release

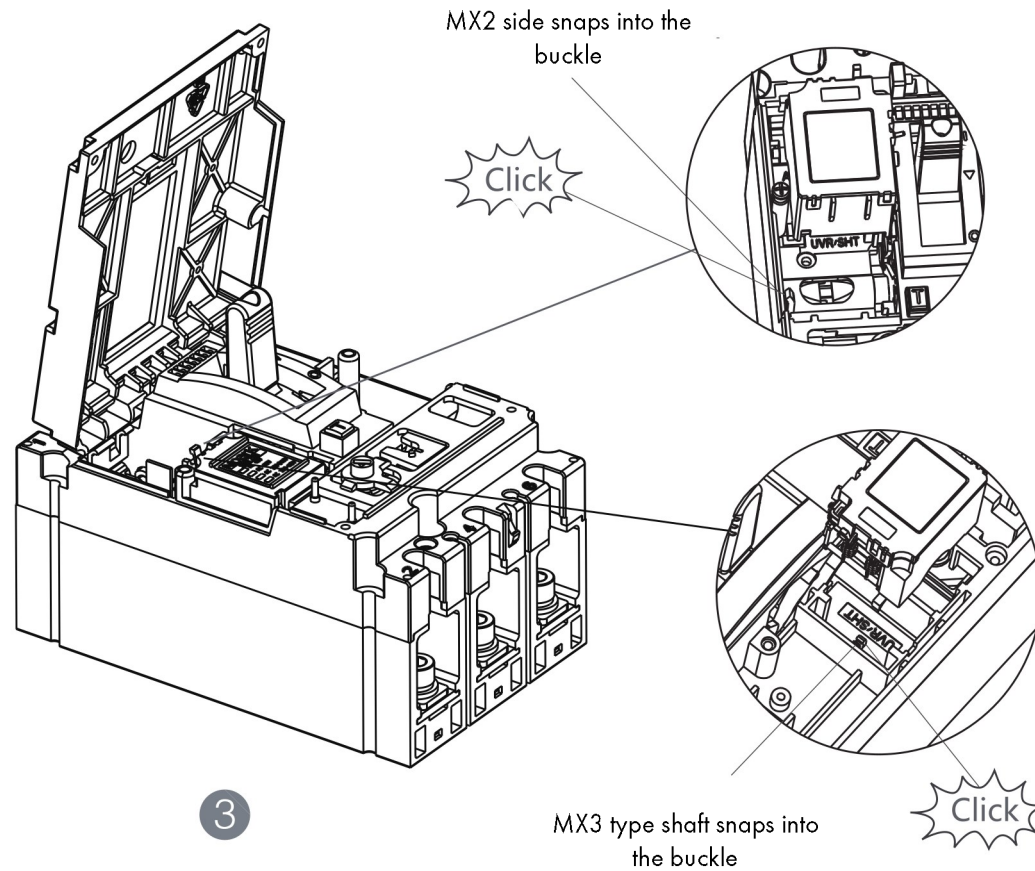
User Manual



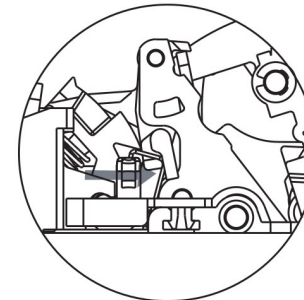
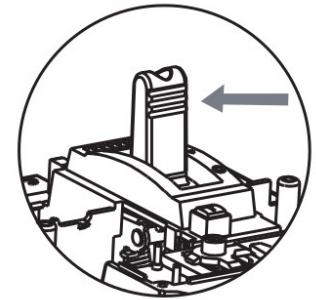
Danger, installation and use by electrician only.



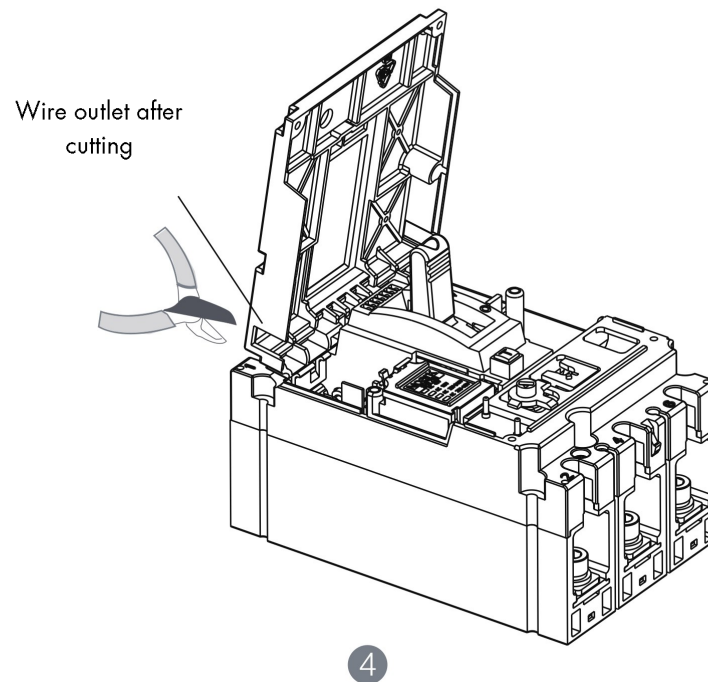




When installing MX2 moulded-case circuit breaker, you need to push the handle gently in the closing direction.

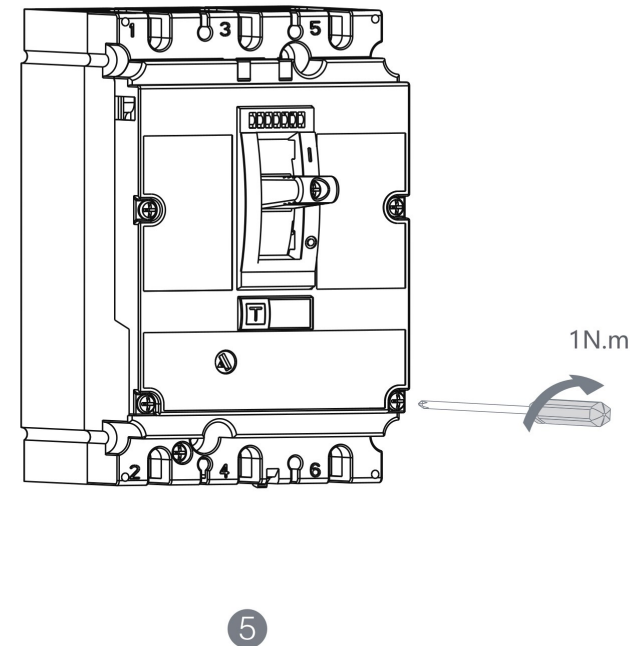


You need to gently push the right slot into the closing direction before installation.



Shunt release

When the control voltage is maintained at 70% -110% U_n , the shunt can reliably open the circuit breaker.



Undervoltage release

- When the control voltage drops to 35% -70% U_n , undervoltage can reliably open the circuit breaker.
- When the control voltage is 85% -110% U_n , the circuit breaker should be able to close reliably.
- When the control voltage is less than 35% U_n , it should be able to prevent the circuit breaker from closing.

Note: The circuit breaker equipped with an undervoltage release can only open and close normally when the control voltage is 85% -110% U_n